

# Toonladders Niveau B

majeur

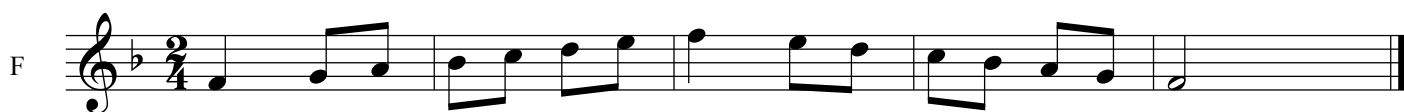
♩ = 120

C



Musical staff for C major scale in 2/4 time. The notes are: C4, D4, E4, F4, G4, A4, B4, C5.

F



Musical staff for F major scale in 2/4 time. The notes are: F3, G3, A3, B3, C4, D4, E4, F4.

G



Musical staff for G major scale in 2/4 time. The notes are: G3, A3, B3, C4, D4, E4, F#4, G4.

Bes



Musical staff for B-flat major scale in 2/4 time. The notes are: Bb3, C4, D4, Eb4, F4, G4, Ab4, Bb4.

D



Musical staff for D major scale in 2/4 time. The notes are: D3, E3, F#3, G3, A3, B3, C#4, D4.

Es



Musical staff for E-flat major scale in 2/4 time. The notes are: Eb3, F3, G3, Ab3, Bb3, C4, Db4, Eb4.

A



Musical staff for A major scale in 2/4 time. The notes are: A3, B3, C#4, D4, E4, F#4, G#4, A4.

# Drieklanken niveau B

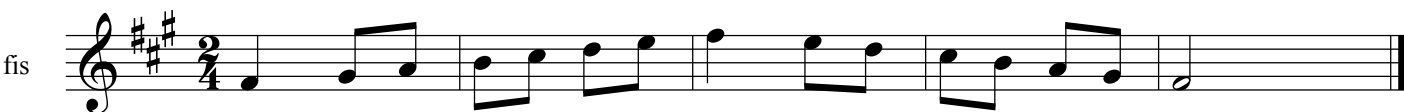
kort gebroken majeur

The image displays a musical score for seven chords: C, F, G, Bes, D, Es, and A. Each chord is represented by a staff in treble clef with a 2/4 time signature. The first measure of each staff contains a quarter-note scale starting from the root of the chord. The second measure contains a triplet eighth-note scale. Above the first measure of the C staff, there is a tempo marking of 84. Above the first measure of the F staff, there is a tempo marking of 60. The chords are: C (C major), F (F major), G (G major), Bes (F major), D (D major), Es (D major), and A (A major). The triplet scales are: C (C4, D4, E4, F4, G4, A4, B4), F (F4, G4, A4, B4, C5, D5, E5), G (G4, A4, B4, C5, D5, E5, F5), Bes (F4, G4, A4, B4, C5, D5, E5), D (D4, E4, F4, G4, A4, B4, C5), Es (D4, E4, F4, G4, A4, B4, C5), and A (A4, B4, C5, D5, E5, F5, G5).

# Toonladders Niveau B

mineur oorspronkelijk

♩ = 120



# Toonladders Niveau B

mineur harmonisch

♩ = 120

a

d

e

g

b

c

fis

# Toonladders Niveau B

mineur melodisch

♩ = 120

a

d

e

g

b

c

fis

# Drieklanken Niveau B

kort gebroken mineur

$\bullet = 84$   $\bullet = 60$

a

d

e

g

b

c

fis

The image shows a musical score for 'Drieklanken Niveau B' in 2/4 time, featuring seven staves (a, d, e, g, b, c, fis) with triplets and tempo markings. The score is divided into two sections: the first section has a tempo of 84 (indicated by a quarter note) and the second section has a tempo of 60 (indicated by a quarter note). Each staff contains a sequence of notes, with the second section featuring triplets of eighth notes. The staves are labeled with letters: a, d, e, g, b, c, and fis. The key signatures are: a (no sharps or flats), d (one flat), e (one sharp), g (two flats), b (two sharps), c (three flats), and fis (three sharps).